

Product	Version	Theme	Environment	Date	Department	Person	Language
SPM	V6 R3 SpA	DATA BASE	Windows XP	24/07/2006	Quality	Technical Support	EN

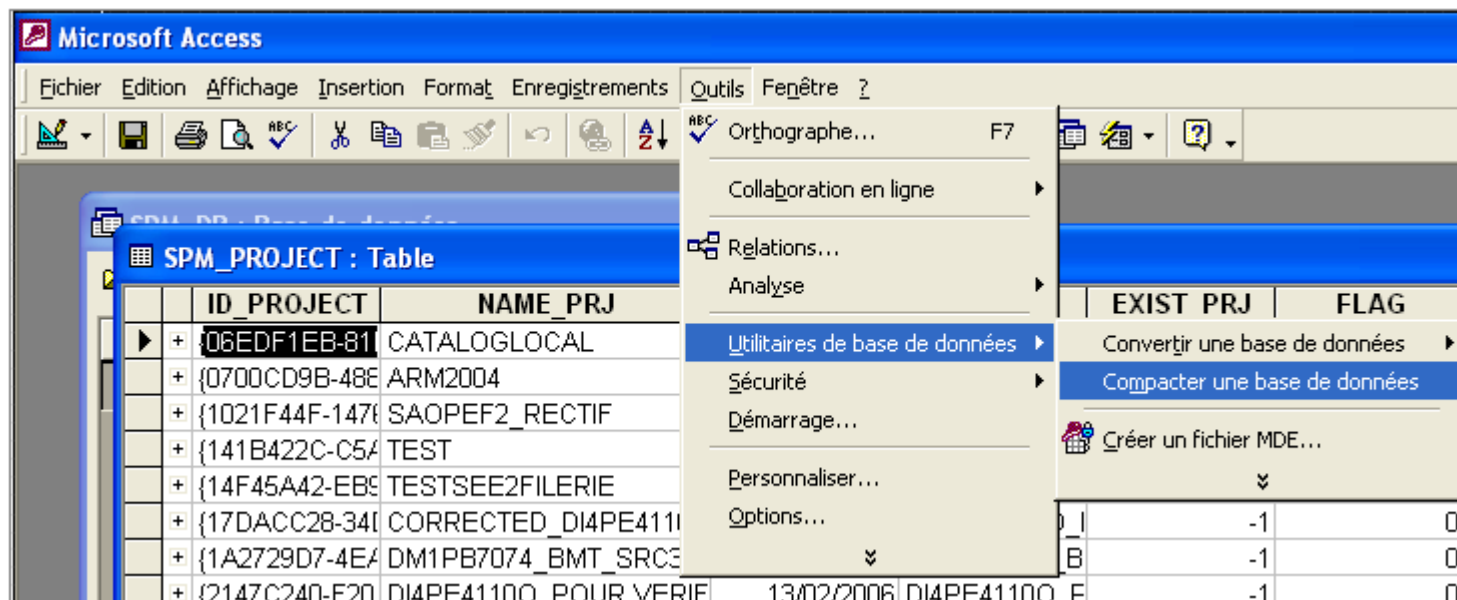
**Subject:**

**PACKING A DATABASE OF PROJECT/ENVIRONMENT IN FORMAT ACCESS**

**Our proposed solution:**

**Solution :** open the database directly with Access and use the command "Packing a database" :

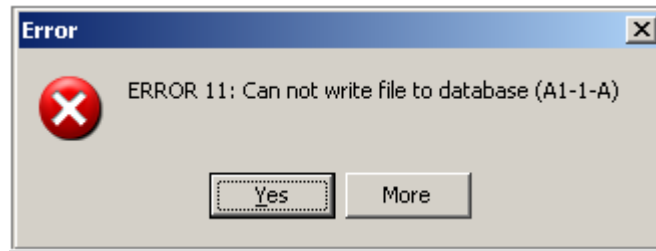
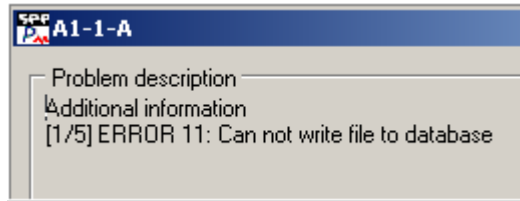
-> In order to optimise the base SPM, directly in Access



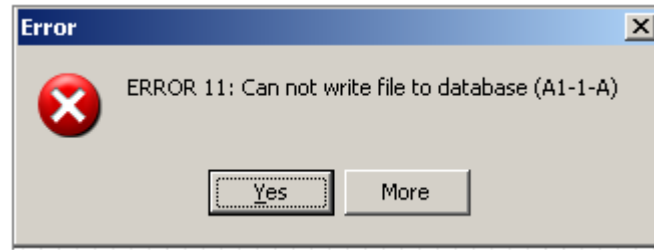
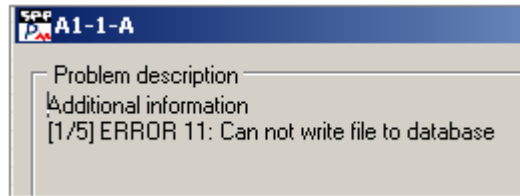
Otherwise you risk to reach the limit of constructive capacity of a database format Access which is of 2 Go.

- If the limit is reached, the following situations are displayed :

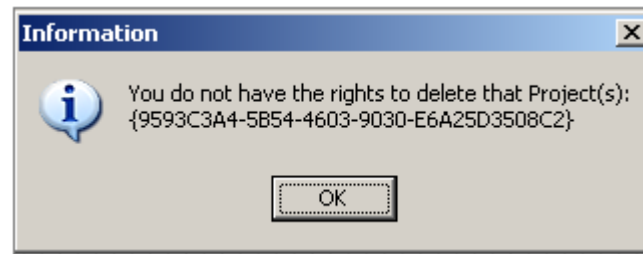
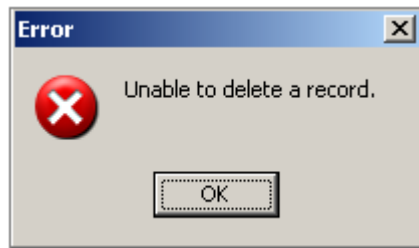
1. Command "CHECK IN" :



2. Command "SAVE" :



3. Command "DELETE PROJECT(s) :



Note : however you preserve the possibility to realise a CHECK OUT (for modification)